

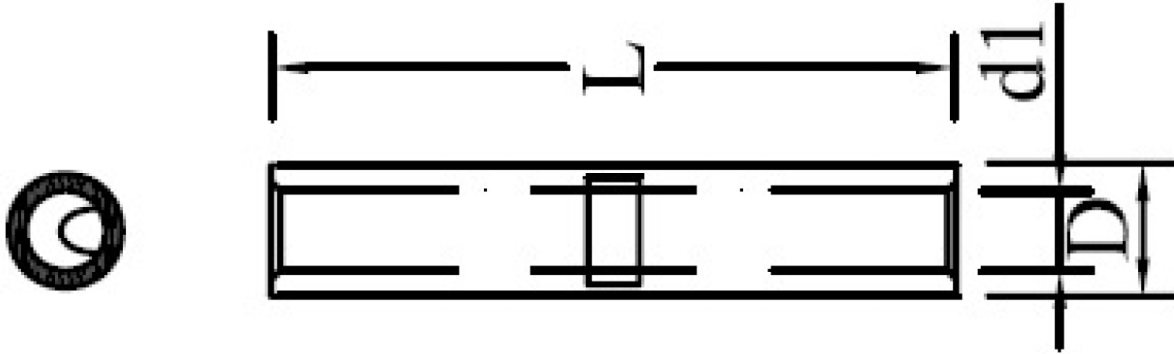


PICO®

PART # 2600, 2700, 2800

Non-Insulated Brazed Butt Connectors Specifications Sheet

OUTLINE DRAWING



NOTES

PART #	WIRE GAUGE	DIMENSIONS			
		L (±0.40)	d1 (+0.20 -0.30)	D (±0.06)	t (±0.04)
2600	22-16 AWG	15.00	1.85	3.32	0.75
2700	16-14 AWG		2.50	4.02	0.80
2800	12-10 AWG		3.60	5.52	0.95
Material		Copper			
Insulation		Non-Insulated			

