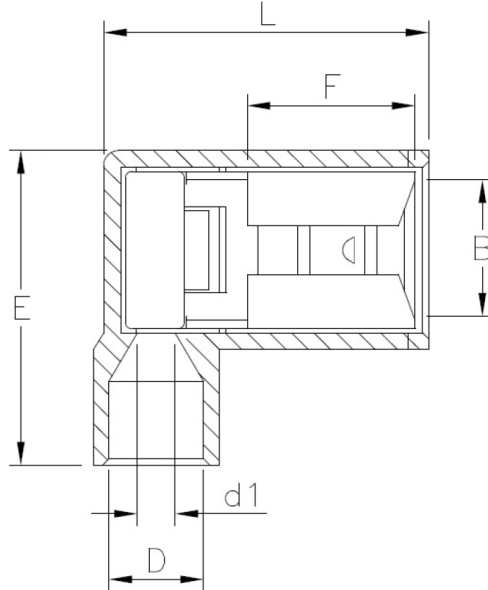




Nylon Insulated Flag Connectors Specifications Sheet

OUTLINE DRAWING



NOTES

Part #	Wire Gauge AWG/mm ²	Insulation Colour	Nema Tab	B ±0.20	F ±0.30	L ±0.60	E ±0.60	D ±0.50	d1 ±0.20	t
2375N	22-18 AWG 0.5-1.5mm ²	Red	0.8 x 6.4	6.6	7.9	15.5	15.0	4.5	1.7	0.45
2475N	16-14 AWG 1.5-2.5mm ²	Blue	0.8 x 6.4	6.6	7.9	15.5	15.0	4.5	2.3	0.45

Maximum Electrical Current

AWG	22	20	18	16	14
MAX AMP	3	4	7	10	15

Maximum Electrical Rating	105°C 300V
Material Thickness	Tolerance ±0.05
Insulation Material	Nylon
Terminal Material	Brass
Terminal Surface Treatment	Tin Plated

