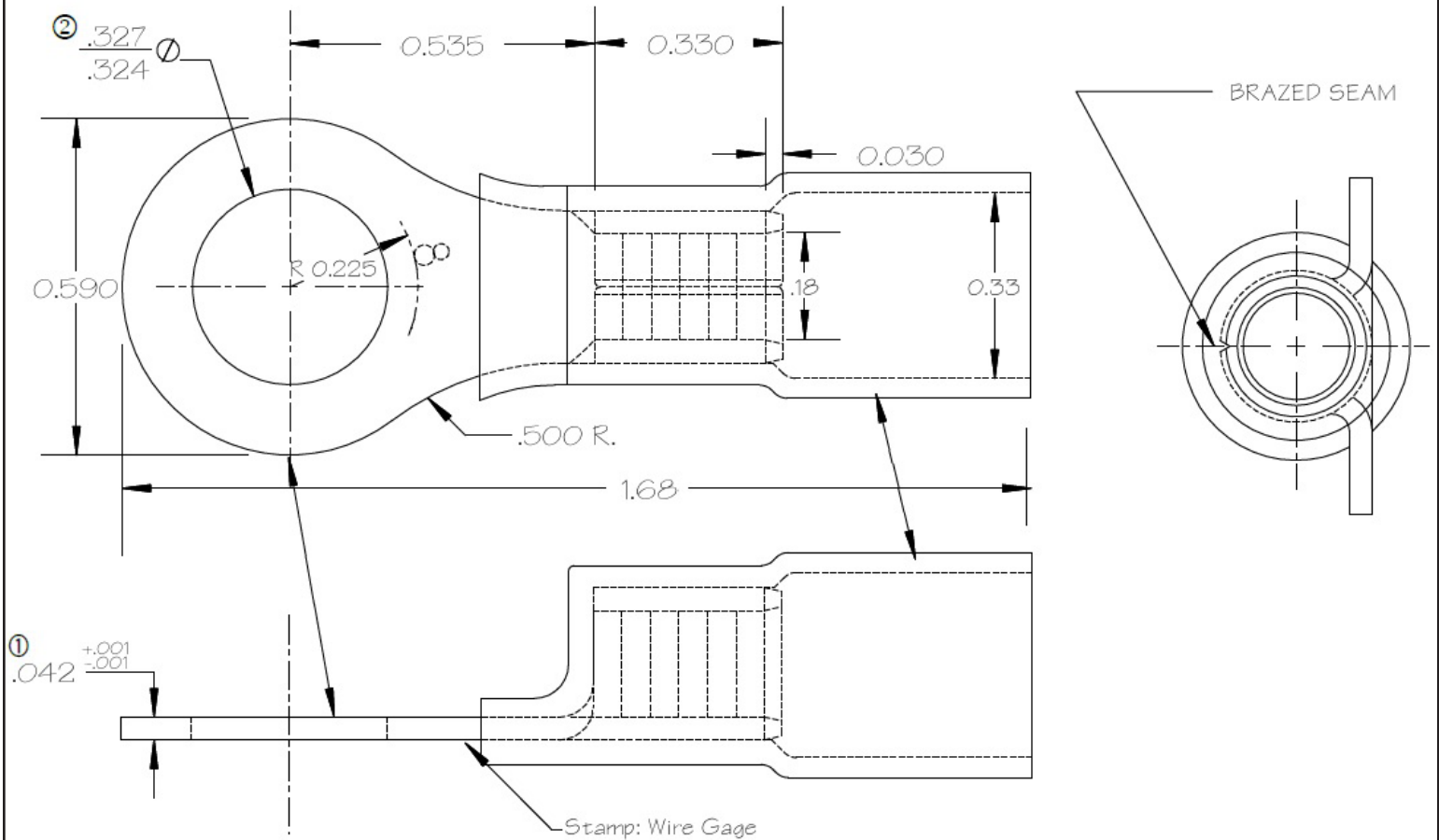




PICO®

6108 Specifications Sheet

Outline Drawings



Terminal Notes

1. Material: ETP Alloy 110 Copper 1/2 Hard Temper
2. Finish: Flash Electro Tin Plate
3. Heat Shrink Insulator Material: Semi-Rigid, Translucent, Adhesive Lined Tubing
4. Colour: Red