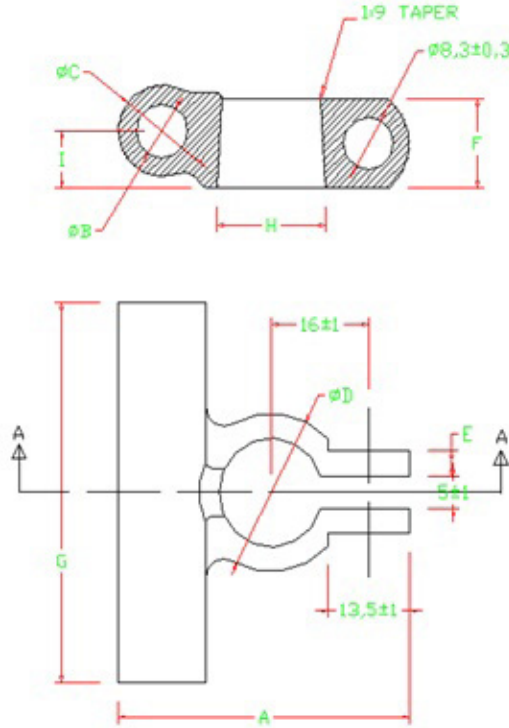




PICO[®]

5229-5236 Specifications Sheet



Part #	AWG	Polarity	Colour	A	B	C	D	E	F	G	H	Finished Weight
				± 2.00	± 0.50	± 0.50	± 1.00	± 0.50	± 0.50	± 2.00	± 0.50	
5229	1/0	Negative	Black	48.0	14.4	11.1	25.0	4.0	14.0	60.0	17.7	64.9
5230	1/0	Positive	Black	48.0	14.4	11.1	26.0	4.0	14.0	60.0	19.4	64.2
5231	2/0	Negative	Orange	50.0	16.4	11.7	25.5	4.5	16.0	60.0	17.7	89.1
5232	2/0	Positive	Orange	50.0	16.4	11.7	26.5	4.5	16.0	60.0	19.4	87.4
5233	3/0	Negative	Purple	51.0	18.4	14.1	25.5	4.5	16.0	60.0	17.7	91.4
5234	3/0	Positive	Purple	51.0	18.4	14.1	26.5	4.5	16.0	60.0	19.4	92.1
5235	4/0	Negative	Yellow	52.0	20.4	16.1	25.5	4.5	16.0	60.0	17.7	99.9
5236	4/0	Postive	Yellow	52.0	20.4	16.1	26.5	4.5	16.0	60.0	19.4	100.7

Notes

1. Material: C11000 ETP Copper
2. Standards: SAE J-1811
3. Dimensions: dimensions in the chart are in millimetre
4. Finished Weight in grams, not including nut & bolt
5. Tin Plate Finish: .0002 to .0004" thickness
6. Bolt Size: .3125-18 x 1.5" Tin Plated with square head and shoulder nut
7. Post Hole Taper: 1:9