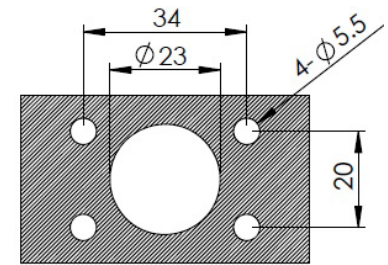
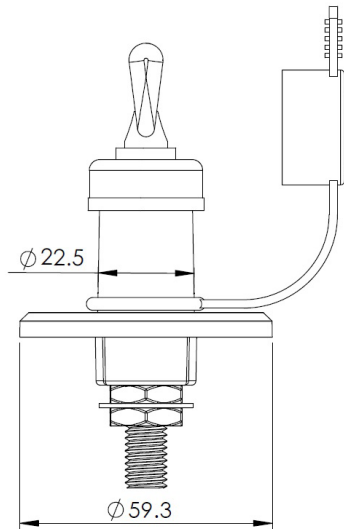
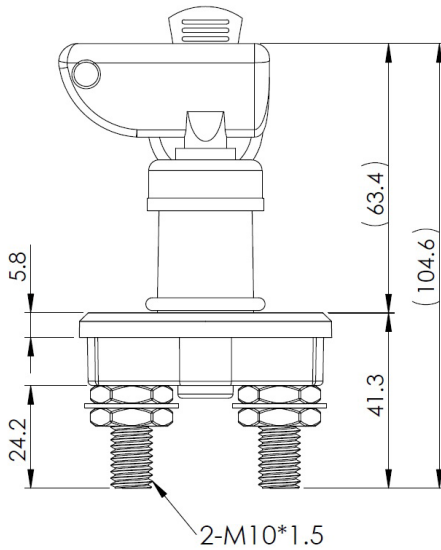




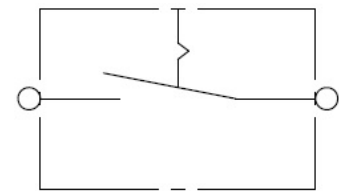
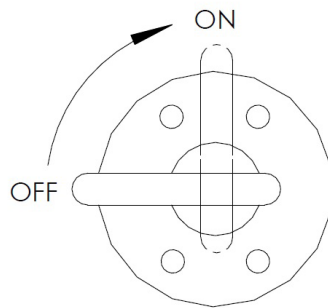
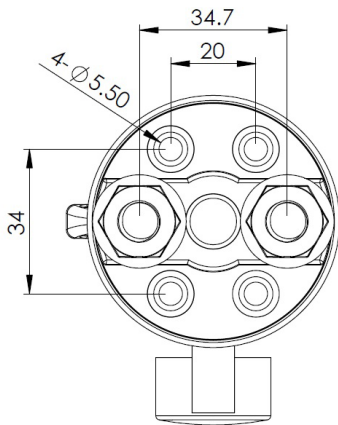
# PICO®

## 9450 Specifications Sheet

### Outline Drawings



PANEL APERTURE



CIRCUIT DIGRAM

### Notes

- Key is only removable in the Off position
- Single Pole Single Throw Switch
- With Water-Proof Rubber Covers
- 2 Position Off- On
- 2 Stud Terminals
- Copper Contacts

### Specifications

Continuous Duty Rating	300 Amps
Momentary Rating	800 Amps 4-6seconds
Operating Voltage Range	12VDC

Continuous Duty Rating	150 Amps
Momentary Rating	400 Amps 4-6seconds
Operating Voltage Range	24VDC