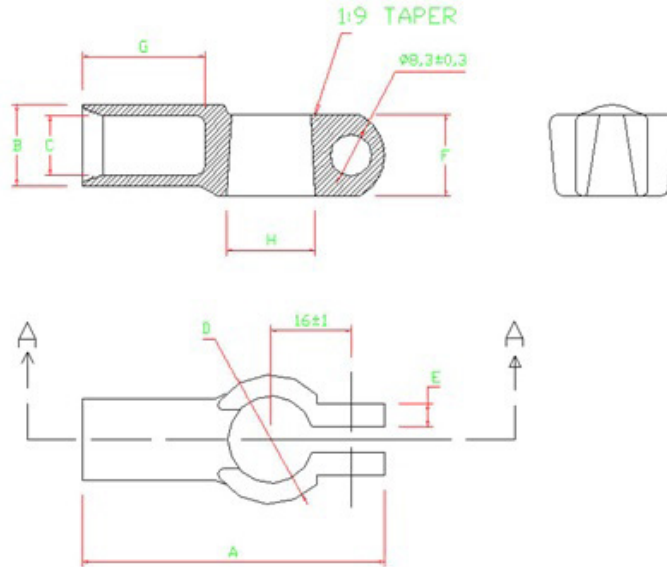




# PICO®

## 5202-5216 Specifications Sheet



Part #	AWG	Polarity	Colour	A	B	C	D	E	F	G	H	Finished Weight
				$\pm 2.00$	$\pm 0.50$	$\pm 0.50$	$\pm 1.00$	$\pm 0.50$	$\pm 0.50$	$\pm 1.00$	$\pm 0.50$	
5202	4	Universal	Grey	58.5	11.1	6.8	26.0	4.0	14.0	23.5	19.4	43.0
5203	4	Negative	Grey	58.5	11.1	6.8	25.0	4.0	14.0	23.5	17.7	40.6
5204	4	Positive	Grey	58.5	11.1	6.8	26.0	4.0	14.0	23.5	19.4	43.0
5207	2-1	Negative	Pink	58.5	12.5	9.0	25.0	4.0	14.0	23.5	17.7	43.8
5208	2-1	Positive	Pink	58.5	12.5	9.0	26.0	4.0	14.0	23.5	19.4	41.5
5209	1/0	Negative	Black	60.0	14.3	11.1	25.0	4.0	14.0	24.5	17.7	43.2
5210	1/0	Positive	Black	60.0	14.3	11.1	26.0	4.0	14.0	24.5	19.4	41.4
5211	2/0	Negative	Orange	60.5	16.0	11.7	25.5	4.5	16.0	25.0	17.7	54.6
5212	2/0	Positive	Orange	60.5	16.0	11.7	26.5	4.5	16.0	25.0	19.4	54.7
5213	3/0	Negative	Purple	60.5	17.9	14.1	25.5	4.5	16.0	25.0	17.7	57.8
5214	3/0	Positive	Purple	60.5	17.9	14.1	26.5	4.5	16.0	25.0	19.4	56.5
5215	4/0	Negative	Yellow	60.5	19.5	16.1	25.5	4.5	16.0	25.0	17.7	60.1
5216	4/0	Positive	Yellow	60.5	19.5	16.1	26.5	4.5	16.0	25.0	19.4	60

### Notes

1. Material: C11000 ETP Copper
2. Standards: SAE J-1811
3. Dimensions: dimensions in the chart are in millimetre
4. Finished Weight in grams, not including nut & bolt
5. Tin Plate Finish: .0002 to .0004" thickness
6. Bolt Size: .3125-18 x 1.5" Tin Plated with square head and shoulder nut
7. Post Hole Taper: 1:9