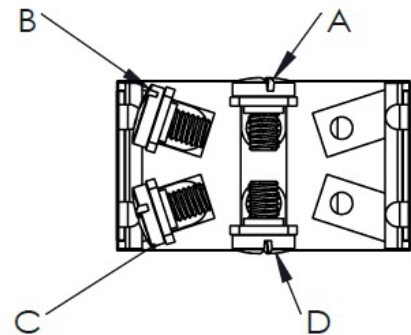
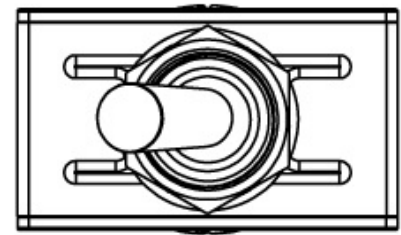
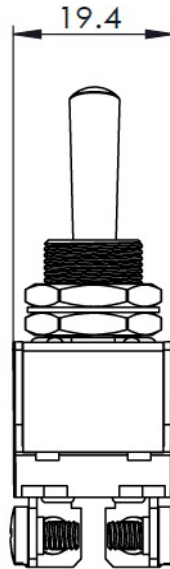
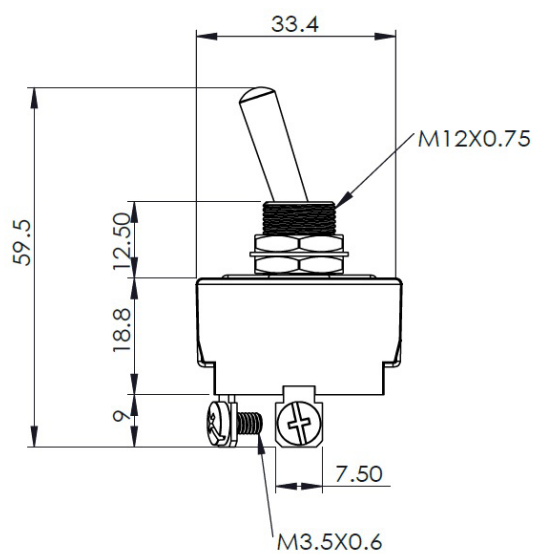




PICO®

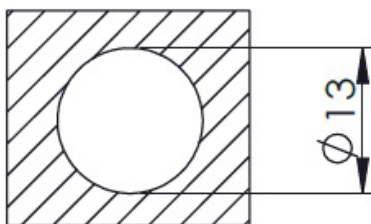
9438 Specifications Sheet

Outline Drawing



Unit of measurement: mm

Panel Aperture



9438	A	B	C	D
OFF				
ON				

Specifications

- Rating:
 - » 12VDC 25A/24VDC 12.5A
 - » 125VAC 12.5A/250VAC 6.3A
- 2 Position: Off - On
- Double Pole Single Throw Switch
- 4 Screw Terminals