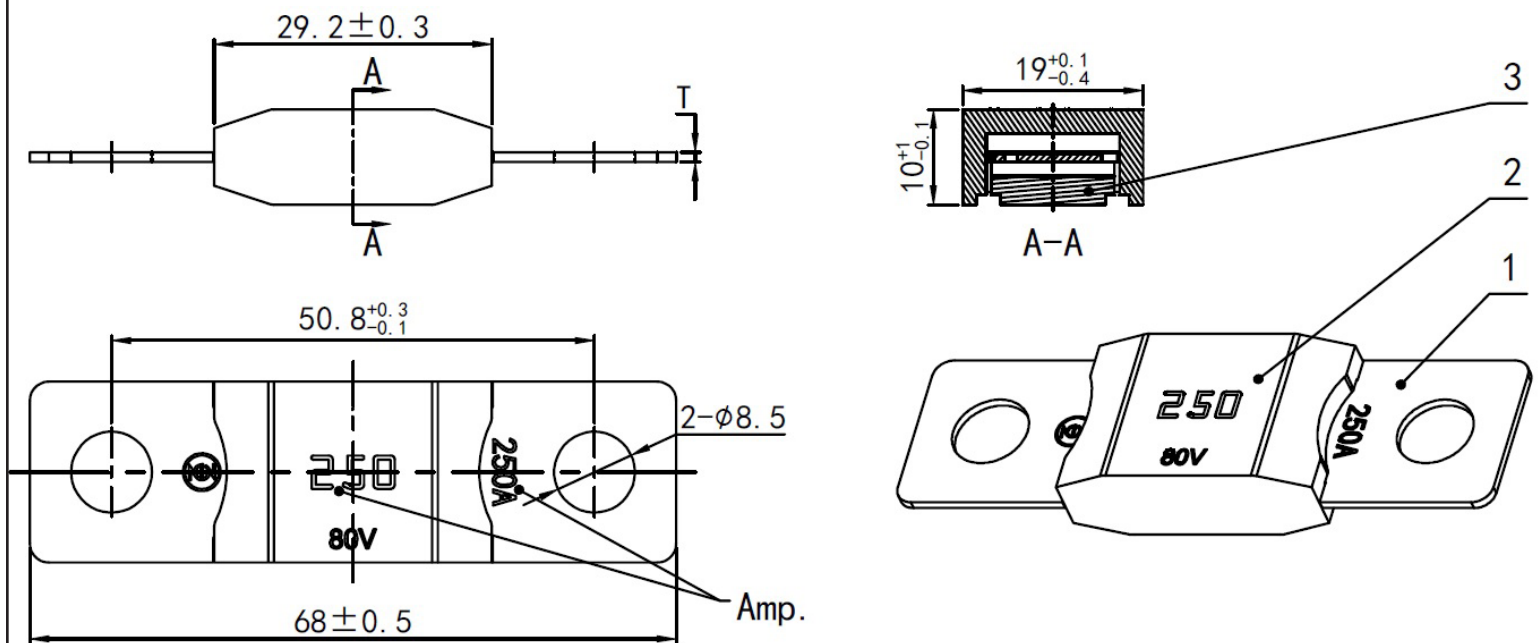




PICO®

9715 Specifications Sheet

Outline Drawing



Time Current Characteristics

Test Current	Opening Time (400A)	
	Min	Max
75%	4Hrs	---
100%	---	---
135%	---	---
200%	1s	15s
350%	0.5s	5s
600%	0.1s	1s

Notes

- Application temperatures: -40C to 125C
- Amp Rating: 400 Amps
- Materials: Copper Alloy, Ceramic
- Interruption rating: 2000@80 V DC
- Voltage Rating: 80 V DC
- Torque suggestion: 13 15 N.m
- This product meets the ISO-8820-5 requirement
- This product meets the ROHS standard