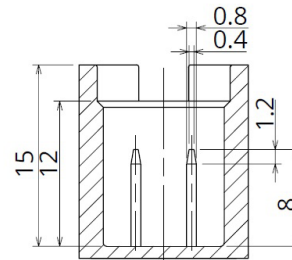
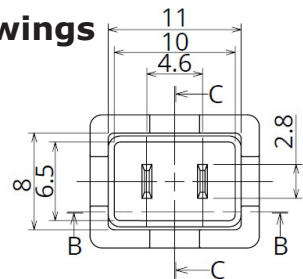
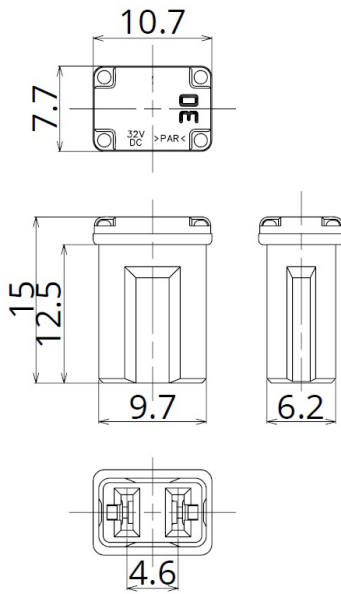




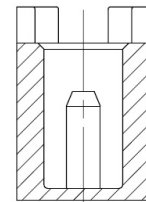
# PICO®

## 10415-10440 Specifications Sheet

### Outline Drawings



B-B



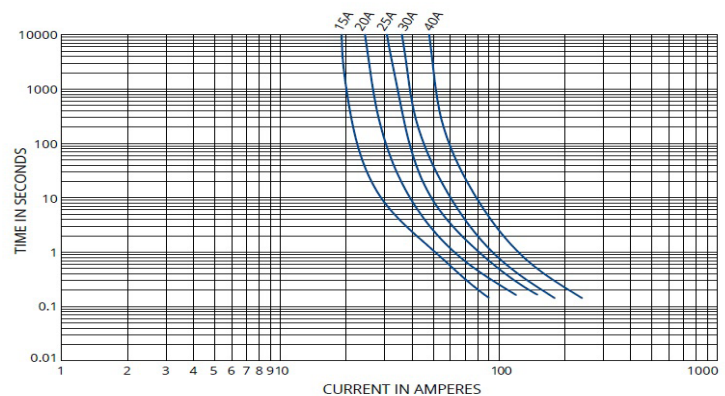
C-C Unit of measure: mm

### Time-Current Characteristics

| % of Amperage Rating | Operating Time |          |
|----------------------|----------------|----------|
|                      | Min            | Max      |
| 110                  | 100hrs.        | -        |
| 135                  | 60sec.         | 1800sec. |
| 200                  | 5sec.          | 60sec.   |
| 350                  | 0.2sec.        | 7sec.    |
| 600                  | 0.04sec.       | 1sec.    |

\*The fuse characteristic may change depending on the conditions of use.

### Time Current Characteristics Chart



### Description

| Part #   | Amp | Voltage | Colours    | Voltage Drop |
|----------|-----|---------|------------|--------------|
| 10415-11 | 15  | 32 VDC  | Gray       | 97 mV        |
| 10420-11 | 20  | 32 VDC  | Light Blue | 94 mV        |
| 10425-11 | 25  | 32 VDC  | White      | 93 mV        |
| 10430-11 | 30  | 32 VDC  | Pink       | 92 mV        |
| 10440-11 | 40  | 32 VDC  | Green      | 98 mV        |

\*Voltage drop: apply 100% of the rated current.

### General Specifications

Rated Voltage: DC32V  
Breaking Capacity: 1000A  
Recommended Operating Temp.: -40°C ~ 120°C  
Standard: JASO D612-4  
Plating: Sn Plating  
Insertion Force: 44.1N  
Pull-out Load 4N~24.5N

