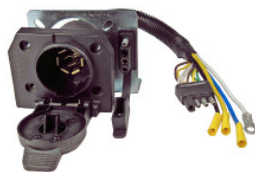


Plugs & Sockets



1 PC

7712-31

7 Pole RV/4 Way Flat 2 in 1 Female Socket

Mounting bracket and hardware included.



1 PC

7747-BP

Chevrolet/GM Vehicle to Trailer Connector 1988+

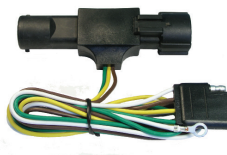


1 PC

7713-11

7 Pole Pre-Wired Female RV Socket

7 Pole RV Socket with 4 Way Flat Male Connector



1 PC

7770-BP

Ford Vehicle to Trailer Connector 1987 - 1997



1 PC

7745-BP

Chevrolet/GM Vehicle to Trailer Connector 1984 & Earlier

Accessories



Junction Boxes

Corrosion-resistant molded cover and housing. Complete with four entrance slots. Two bolt mounting, and access slot grommets.

Part No.	Description	Qty
990-E	7 Pin	1
991-E	14 Pin	1



998-31 (1 PC)

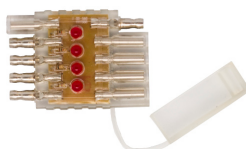
Corrosion-resistant molded cover and housing. Complete with four entrance slots. Two bolt mounting, and access slot grommets. Plus its transparent for easier inspections.



Terminal Blocks

Safely add circuits to a vehicle's electrical system. Each section is one position. #8 stud terminals

Part No.	Description	Qty
992-11	4 Position, 8 stud	1
993-11	6 Position, 12 stud	1
994-31	10 Position, 20 stud	1



Trailer Testers

Insert between the two connections, and always be able to see if you have a proper connection. LED will light up if a proper connection is made.

Part No.	Description	Qty
7730-11	4 Way	1
7731-11	5 Way	1



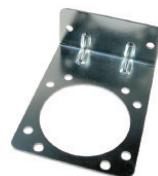
9470-31 (1 PC)

4 & 6 Pole Trailer Connector Bracket Hardware Included.



9479A-E (1 PC)

7 Pole Boot for Pico No. 9479, 9483, and 9488 Female Sockets



9490-31 (1 PC)

7 Pole RV Trailer Connector Bracket



9491-31 (1 PC)

7 Pole Trailer Connector Bracket



Breakaway Switch

Connects tow vehicle to breakaway battery. Activates trailer brakes, when key is pulled during a disconnect.

Part No.	Description	Qty
9492-11	Breakaway Switch	1
9493-11	Replacement key	1