

## Standard Blade

Blade type fuse whose basic components are a plastic housing and two blade terminals with a fuse element fabricated from a single piece of metal. Industry standard colour coded to indicate amp rating.



### 4 Way Fuse Block

Brass Terminals (Pico No. 1598, page 51) included. Multiple blocks stack together.

1 PC

945-11

10 PCS

945-34



### Add-A-Circuit Fuse Holder

Allows an addition of a new circuit by tapping into a fuse block.

Part No.

16 AWG 10A

1 PC

982-11

10 PCS

982-34

100 PCS

982-36



### 6 Way Fuse Block w/ Screw Terminals

For fuses or plug-in circuit breakers. #10-32 stud terminal with hex nut, flat washer & lock washer supplied. 4 mounting holes for #10 screws. Recessed area in center of block for application of label. Recessed fuse contacts, no cover required. Rugged lightweight construction. 25A Max per Circuit, 150A Max Load

Part No.

3413-11

Qty

1



### 6 Way Fuse Block w/ Tab Terminals

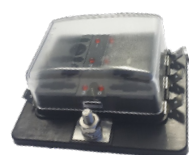
For fuses or plug-in circuit breakers. #10-32 stud terminal with hex nut, flat washer & lock washer supplied. 4 mounting holes for #10 screws. Recessed area in center of block for application of label. Recessed fuse contacts, no cover required. Rugged lightweight construction. 25A Max per Circuit, 150A Max Load

Part No.

3410-11

Qty

1



### 6 Way Fuse Block w/ Tab Terminals & LED Indicators

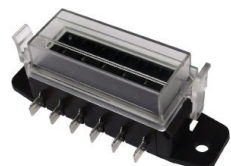
For Standard Blade Fuses. Recessed fuse contacts, cover included. 30A Max per Circuit 100A Max Load

Part No.

3416-11

Qty

1



### 6 Way Fuse Block w/ Dust Cover

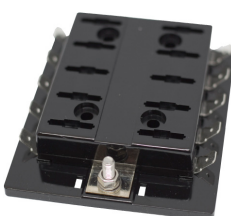
Mount Holes (Center to Center): 84.8 mm  
Mount Holes (Diameter): 5.5 mm  
Tab Terminals  
15A Max per Circuit, 45A Max Load

Part No.

3412-11

Qty

1



### 10 Way Fuse Block w/ Tab Terminals

For fuses or plug-in circuit breakers. #10-32 stud terminal with hex nut, flat washer & lock washer supplied. 4 mounting holes for #10 screws. Recessed area in center of block for application of label. Recessed fuse contacts, no cover required. Rugged lightweight construction.

Part No.

3409-31

Qty

1



### Add-Two-Circuits Fuse Holder

Allows the addition of two new circuits by tapping into a fuse block. 16GA 10A MAX per fuse slot 32 VDC.

Description

16 AWG 10A

1 PC

974-11

10 PCS

974-34

100 PCS

974-36



### Standard Blade Fuse Holder

Waterproof seal tested to work for at least 30 minutes under 1m of water. Also holds Min Blade Fuses. IP67 Rated.



Description

10GA 40A

1 PC

948-11

10 PCS

948-34

100 PCS

948-36

12GA 30A

949-11

949-34

949-36



### Panel Mount Fuse Holder

Multiple holders nest together. Fuse not included.

Description

16 AWG 15A

1 PC

9900-11

10 PCS

9900-34



### Standard and Glass Fuse Puller

Fuses not included.

Part No.

983-11

Qty

1



### Adjustable Fuse Tester

Can Test all PICO Blade Fuses, from Standard to Low Profile. Simple adjustable probe can be moved to change the width.

Part No.

976-11

Qty

1